



WARNING: CHOKING HAZARD

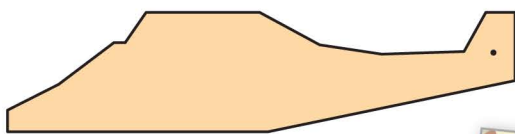
Toy contains small parts and functional/sharp points.
Not for children under 4 years old.
Adult supervision required.



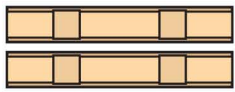
HELICOPTER

Made in Chonburi, Thailand exclusively for The Home Depot by Houseworks, Ltd
2388 Pleasantdale Road, Atlanta, GA 30340 · batch #171113 · date: 07/18

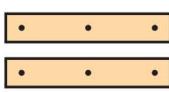
Contents:



1 Helicopter Body



2 Landing Skids



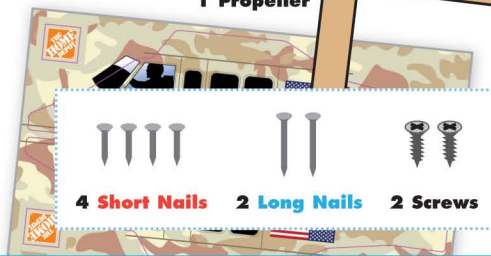
2 Braces

1 Sticker Sheet

1 Tail Rotor



1 Propeller



4 Short Nails 2 Long Nails 2 Screws



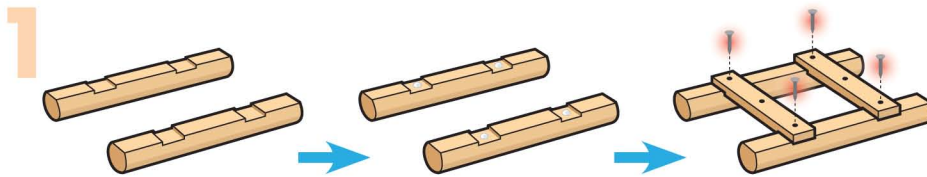
Finished example.

ALSO NEEDED:

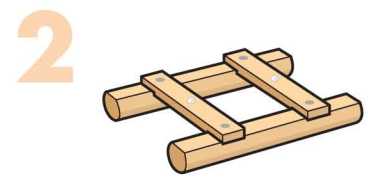
- Safety Goggles
- Fine Sandpaper
- Wood Glue
- Hammer
- Phillips Head Screwdriver

Assembly:

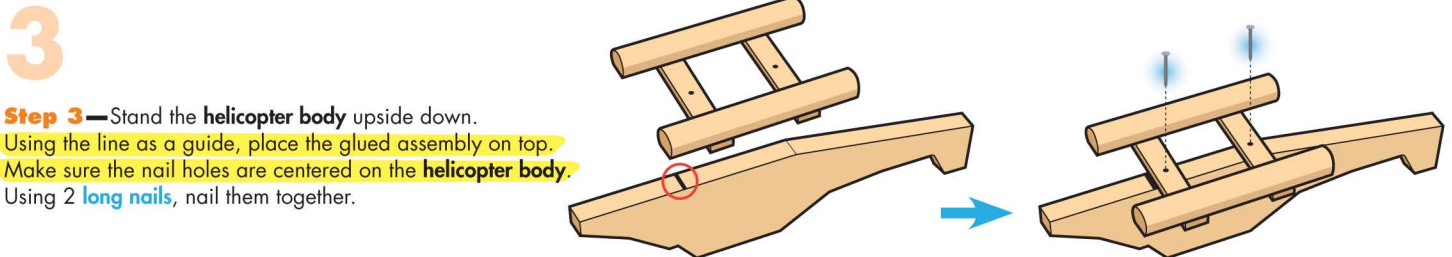
Start with sanding each wood piece to remove any rough edges. Remember to sand in the direction of the wood grain. Glue and nail the pieces together. Allow glue to completely dry.



Step 1—Lay both landing skids down with the flat sides up. Add a little glue to the notches. Fit the braces to the notches. Make sure outside edges are even. Using 4 short nails, nail them together.

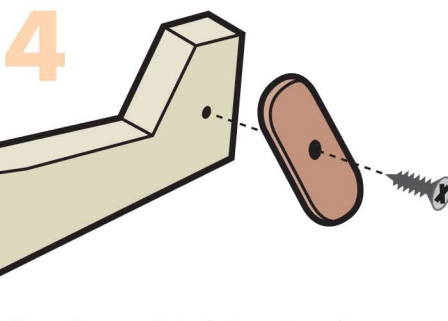


Step 2—Add a little glue on the remaining center nail holes.

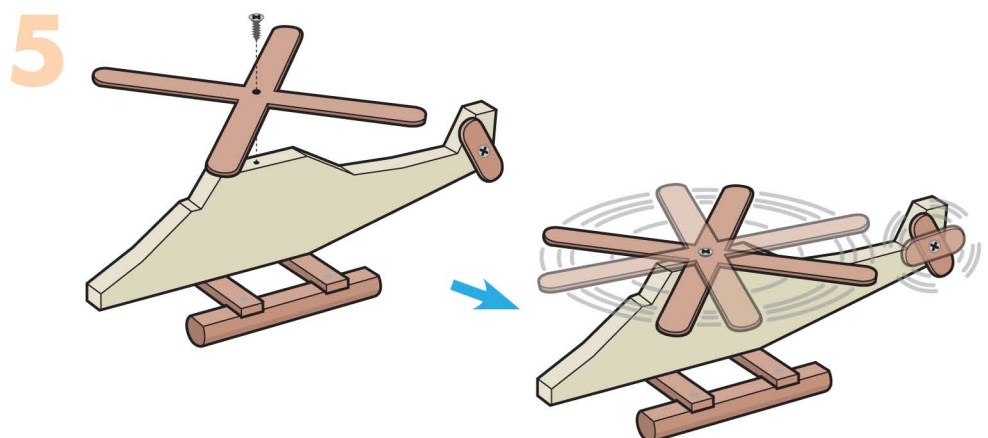


Step 3—Stand the helicopter body upside down. Using the line as a guide, place the glued assembly on top. Make sure the nail holes are centered on the helicopter body. Using 2 long nails, nail them together.

Attention: If you are painting the project, make sure NOT to paint the holes on the helicopter body. Allow paint to dry completely.



Step 4—Match the hole on the tail rotor to the hole on the tail of the helicopter body. Carefully attach them together with a screw. Don't screw tight and to make sure the tail rotor spins.



Step 5—Match the hole on the propeller to the hole on the top of the helicopter body. Carefully attach them together with a screw. Don't screw tight and to make sure the propeller spins.

Add the stickers as shown above.

(Ver el dorso para instrucciones en español.)

California 93120 compliant for formaldehyde phase 2